

# Navisworks Basic Skills for Contractors

*Taught by Digital Vision Automation*

*NavisWorks and Spatial Coordination Specialists*

## Organizing the Clash Detection Process



- Goals of the MEP Coordination Process
- Getting organized for MEP Model Coordination (Spatial Coordination) Meetings
- Setting up an iRoom for optimal coordination success
- Tips for efficiently running MEP Coordination meetings

## File Organization

- Establishing and organizing a BIM file storage location
- What to do when a model comes in at the wrong scale or location
- Overriding transparency, color, and object/model location

## Importing

- How to import and append 3D model files
- What file formats to import
- Understanding NavisWorks file formats: NWF, NWC, NWD
- Making sure all files correspond to the correct x, y, z origin
- The importance of a 3D Grid
- Object enablers

## Customizing your Workspace

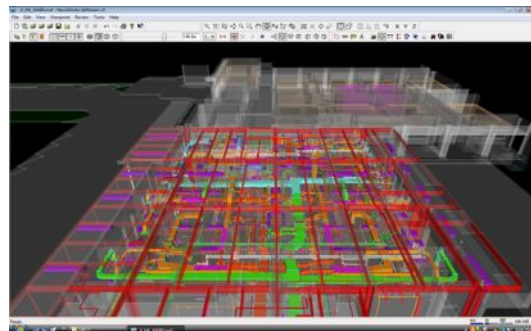
- Toolbars and settings
- What do all the NavisWorks buttons do; the ones you need and the ones you don't need

## Navigation

- Zooming, panning, walking around
- Sectioning
- Moving objects

## Selecting

- Selecting objects or layers
- Hiding layers and objects
- Establishing Selection Sets



### **Getting the Most Out of Clash Detective**

- What Batches do you need to set up
- How to minimize “false positives” clashes
- Difference between Hard and Clearance clashes
- Setting clash clearances and tolerances
- Understanding clash Status
- Creating Comments
- Creating Clash Reports
  - HTML
  - Viewpoints

### **Viewpoints**

- Establishing and organizing custom Viewpoints
- Measuring
- Mark-up and red-lining
- Smart Tags

### **Communicating Issues with Specialty Trades**

- Organizing distribution of Clash Reports
- Using the Publisher to distribute the model file and Viewpoints
  - Using the Freedom Viewer
- Saving JPG images of conflicts and markups for e-mail or print
- Getting sign-off on final coordination models and documents

