

Navisworks Basic Skills for Specialty Trades

*Taught by Digital Vision Automation
NavisWorks and Spatial Coordination Specialists*

Overview of the Clash Detection Process



- Goals of the MEP Coordination Process
- Coordinating with other trades
- How to prepare for MEP Model Coordination (Spatial Coordination) Meetings

File Organization

- What to do when a model comes in at the wrong scale or location
- Overriding transparency, color, and object/model location

Importing

- How to import and append 3D model files
- What file formats to import
- Understanding NavisWorks file formats: NWF, NWC, NWD
- Making sure all files correspond to the correct x, y, z origin
- The importance of a 3D Grid
- Object enablers

Customizing your Workspace

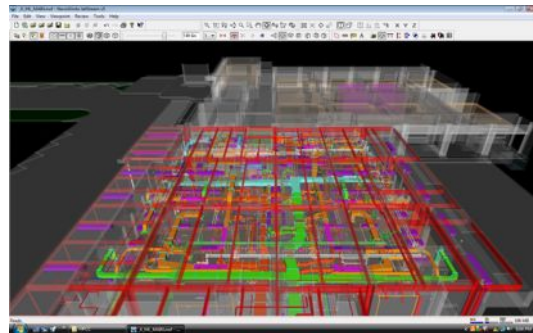
- Toolbars and settings
- What do all the NavisWorks buttons do; the ones you need and the ones you don't need

Navigation

- Zooming, panning, walking around
- Sectioning
- Moving objects

Selecting

- Selecting objects or layers
- Hiding layers and objects
- Establishing Selection Sets



Getting the Most Out of Clash Detective

- What Batches do you need to set up
- How to minimize “false positives” clashes
- Difference between Hard and Clearance clashes
- Setting clash clearances and tolerances
- Understanding clash Status
- Creating Comments
- Creating Clash Reports
 - HTML
 - Viewpoints

Viewpoints

- Establishing and organizing custom Viewpoints
- Measuring
- Mark-up and red-lining
- Smart Tags

Using the Publisher

- Publishing the model file and Viewpoints
- Using the Freedom Viewer

Communicating with In-house Colleagues and Detailers

- Internal/in-house clash detection
- Saving JPG images of conflicts and markups for e-mail or print

