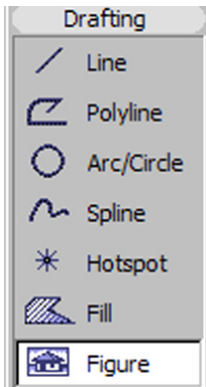


Starting Out with a Scanned Image

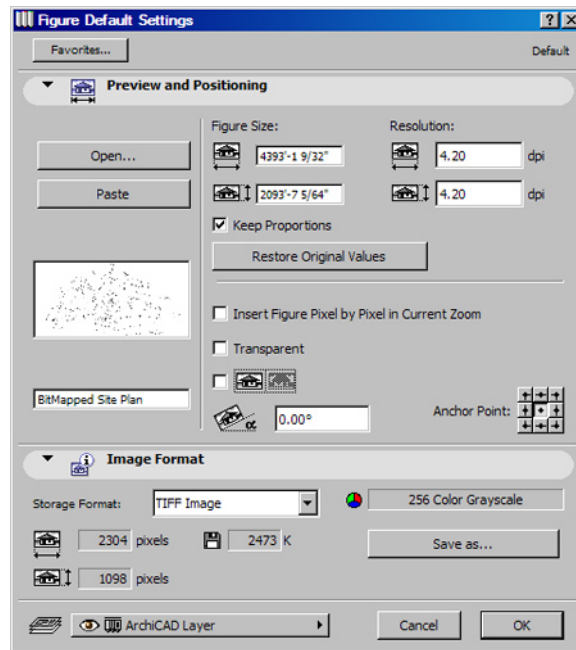
It is important to realize that any bitmapped image (which is what a scan is) is not going to be at an accurate scale, because a scanned image is a bunch of dumb dots, unlike a CAD image which is defined by precise lines (vectors) that have an exact start point and ending point. Bitmapped images deal in dots (pixels) horizontal and vertical, not scale.



1. Simply import the scanned image by going to the File menu and choose the Merge command. Set the “Files of Type” to “All Files” and go to the folder that contains your scan in a pict, bmp, jpg, or tif file format. Choose the correct file and press “Open.”



Or, choose the Figure tool, open its settings and press the “Open” button to open your scanned image file. Your imported scan is called a “figure” and is automatically placed on the ArchiCAD layer when you click “OK.”

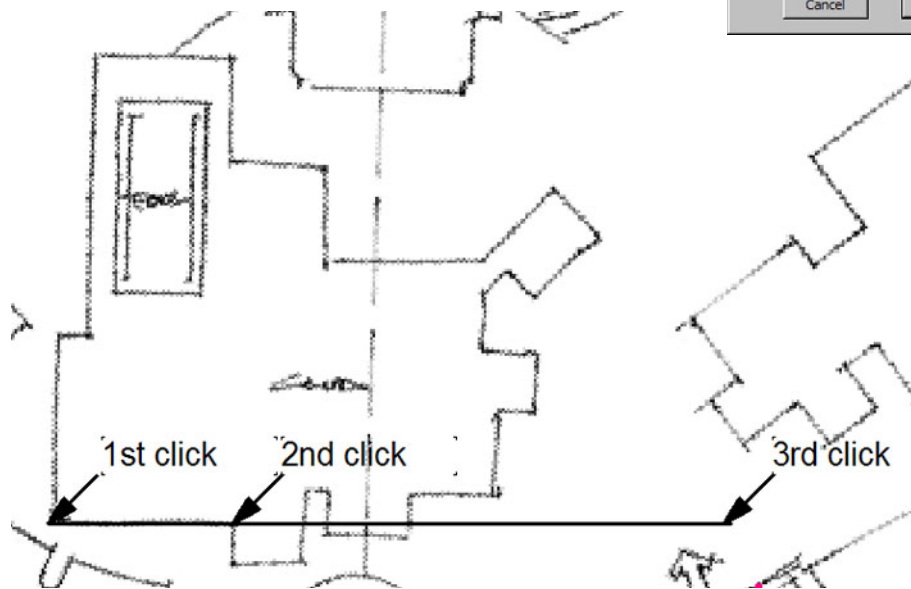
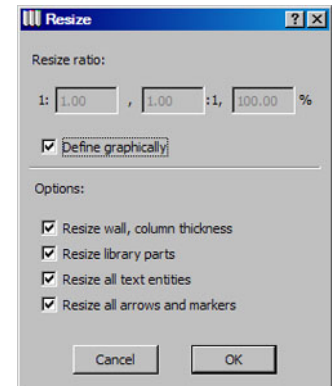


2. Look for a known distance or dimension on your site plan, perhaps a property line or the edge of a building (ideally a horizontal or vertical line which will help you realize if your scan needs to be rotated or not). If the scan needs to be rotated, do so at this time. Let’s refer to this line on the scan the “reference” line.
3. Using the Line tool, draw a line that starts at one end of your “reference” line that equals the stated distance. TIP: choose the Line tool, click the mouse at one of the end points of the line to reference, and drag your mouse over the line on the scan to establish the angle. Press the “r” key on your keyboard and in the highlighted “r” field in the coordinate box,

type the desired distance and press Enter. Your line will be either longer or shorter than the line on the bit mapped scan. You will now get a feeling for how far off the scan is compared to the scale of your current drawing.

4. Now, your task is simply to enlarge or shrink (scale) your scanned image so that the line you have chosen in your scan equals the line you have drawn in ArchiCAD. You have a choice to use the automatic method or the trial and error method to scale your scan.

- a. Automatic method: Choose “Resize” from the Edit menu. Make sure the “Define graphically” option is checked. Click OK. Now click on the start end of the line you just drew in ArchiCAD, drag the mouse and click once at the end of your “reference” line on the scanned image. Now click once on the end of your line drawn in ArchiCAD and voila, the scan will scale accordingly, and your line and the “reference” line on the scan will be the same length.



- b. Trial and error method: You scale up or scale down your scan by selecting it by one of its corners, hold down the shift key to keep the aspect ratio constrained and drag diagonally. Via “trial and error,” when the ArchiCAD line and the “reference” line on you scan match in length, you have scaled the scanned bitmapped image.
5. Once your scan is scaled properly, simply “trace” over the scanned lines with whatever tool you choose. **Note:** you will not be able to snap to any lines or intersections on the scanned image, since it is bitmapped and not vector-based.